

Rab35

Catalog Number: 21078

Gene Symbol: RAB35

Description: Anti-Rab35 Rabbit Polyclonal Antibody

Background: The Rab family of GTPases regulates eukaryotic vesicular membrane traffic. Rab35 is with both plasma membrane and endosomal localization and has been implicated in diverse processes that include T-cell receptor recycling, oocyte yolk protein recycling and cytokinesis. Rab35 regulates neurite outgrowth inneuronal-like cells and can induce protrusions.

Immunogen: A synthetic peptide from the internal region of human Rab35 protein

Tested Applications: ELISA, WB, IHC, IP

Recommended Dilutions:

ELISA	1:100-1:5000
WB	1:100-1:1000
IHC	1:10-1:100

Concentration: 0.2 mg/ml

Host: Rabbit

Clonality: Polyclonal

Purity: Purified from serum

Format: Liquid

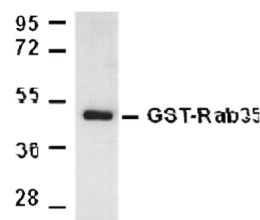
Preservative: No

Constituents: PBS (without Mg²⁺ and Ca²⁺), pH7.4, 150 mM NaCl, 50% glycerol

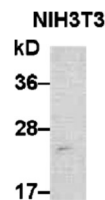
Species Reactivity: Rab35 antibody recognizes Rab35 proteins from vertebrates.

Storage Conditions: Store at -20°C. Avoid freeze / thaw cycles

Western blot:



WB: anti-Rab35 pAb



WB: anti-Rab35 pAb

Purified recombinant GST-tagged Rab35 proteins (top panel, Cat. # 10132) and NIH 3T3 cell lysates (bottom panel) were used for Western blot with anti-Rab35 polyclonal antibody (Cat. # 21078).

FOR RESEARCH USE ONLY. NOT FOR DIAGNOSTIC APPLICATIONS